

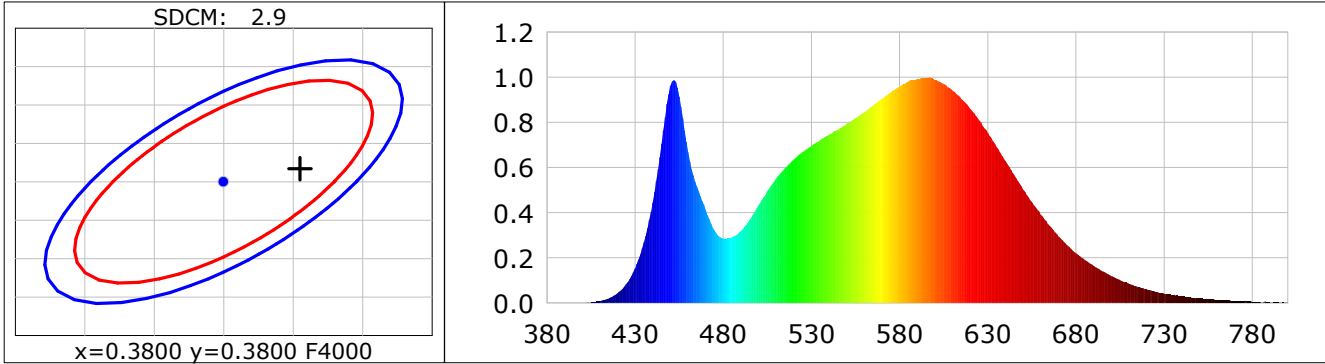
**Lightsource Test Report**

**Product Infomation**

Product Category: LED STRIP	Product Type: LED STRIP
Product Spec: BELL 2	Product Number: 392
Manufacturer: TECSOLEED S.L.	Buyer: TECSOLEED S.L.

**CIE Colorimetric Parameters**

Chromaticity coordinates:  $x=0.3855$   $y=0.3817$   $u(u')=0.2264$   $v=0.3363$   $v'=0.5045$   
 CCT:  $T_c=3903K$  ( $duv=0.00085$ ) Color Ratio:  $R=0.185$   $G=0.781$   $B=0.034$   
 Peak Wavelength: 596.8nm Half Bandwidth: 145.0nm  
 Dominant Wavelength: 597.9nm Color Purity: 0.303  
 CRI:  $R_a=82.1$ ,  $avgR(1\sim14)=75.2$ ,  $avgR(1\sim15)=75.1$  TM30:  $R_f=83$ ,  $R_g=95$   
 GAI:  $GAI\_BB\_8=91.0$ ,  $GAI\_BB\_15=97.9$ ,  $GAI\_EES=70.3$   
 R1 =80 R2 =89 R3 =95 R4 =81 R5 =80 R6 =84 R7 =85 R8 =63  
 R9 =5 R10=72 R11=79 R12=61 R13=82 R14=97 R15=74  
 Color Quality Scale:  $Q_a=82.0$ ,  $Q_f=82.2$ ,  $Q_p=81.7$ ,  $Q_g=92.1$   
 Q1 =81 Q2 =98 Q3 =79 Q4 =75 Q5 =80 Q6 =82 Q7 =84 Q8 =88  
 Q9 =97 Q10=88 Q11=85 Q12=83 Q13=83 Q14=72 Q15=75



**Photometric Parameters**

Luminous Flux: 2263.0 lm	Efficiency: 106.32 lm/W	Radiant Power: 6.770 W
Total mains efficacy: 98.45 lm/W	Energy Efficiency Class: F (EU 2019/2015)	

**Electric Parameters**

Voltage: 24.000V	Current: 0.8869A	Power: 21.28W
Power Factor: 1.0000	Frequency: 0.00Hz	

**Test Infomation**

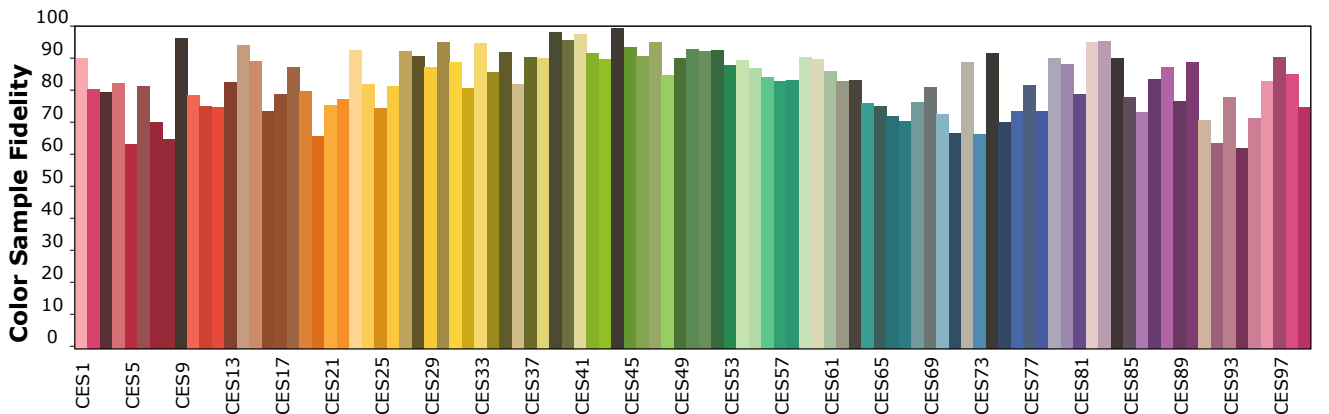
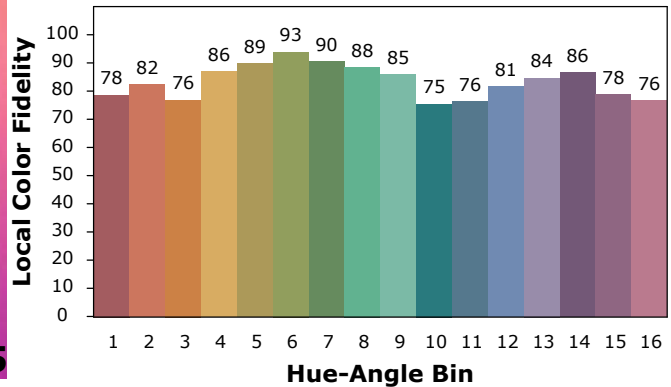
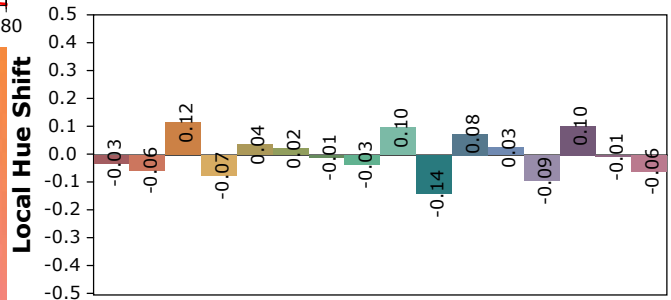
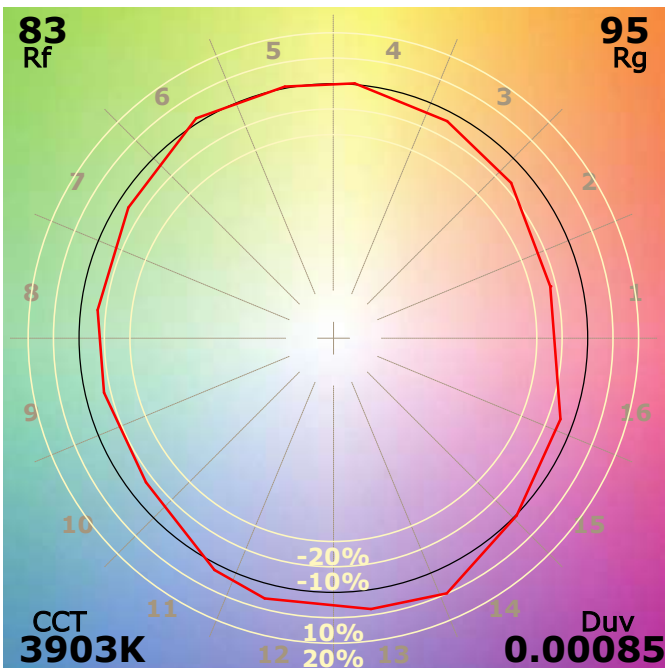
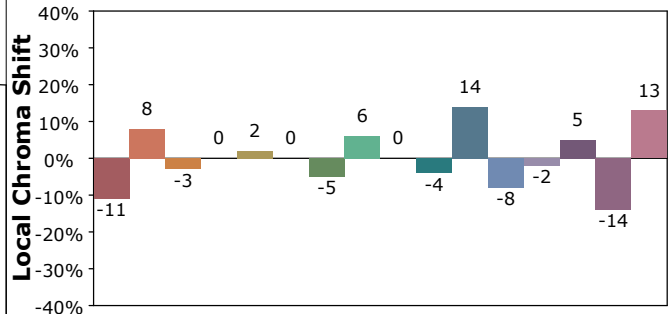
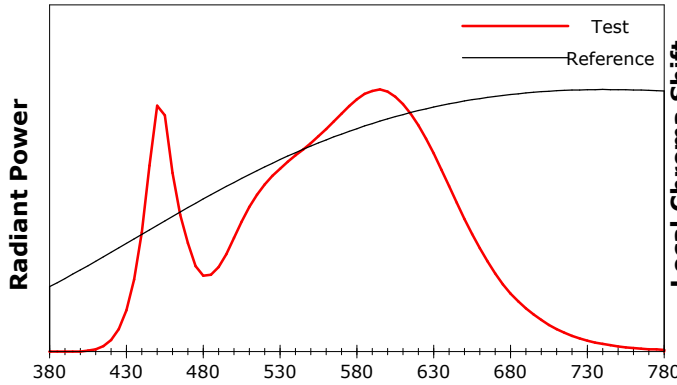
Scan Range: 380~800:1nm	Photometric Method: sphere-spectroradiometer
Stabilization Time: 0 Sec ALC.: 1.0000	Photometric Condition: Sphere diameter: 1.50m, 4PI
Max of Signal: 46781 (1995)	CCD Integration Time: 290.31 ms

## IES TM-30-18 Color Rendition Report

**Product Information**

Product Category: LED STRIP  
 Product Spec: BELL 2  
 Manufacturer: TECSOLED S.L.

Product Type: LED STRIP  
 Product Number: 392  
 Buyer: TECSOLED S.L.



Condition: Tx:17.2'C, Ti:16.5'C, R.H.:60%  
 Test Lab: TECSOLED S.L.  
 Operator: JORDAN GIL DIAZ

Test Device: Inventfine CMS-2S (Plus)  
 Test Time: 2021-11-08 15:20:47  
 Inspector: